

## WIB BOARD MEMBERS

**LARRY BOOTH**  
Frank M. Booth, Inc.

**BRIAN BROADWAY**  
Sacramento Job Corps

**BILL CAMP – Second Vice Chair**  
Sacramento Central Labor Council

**PAUL CASTRO**  
California Human Development Corporation

**N. LISA CLAWSON**  
Blood Source, Inc.

**LYNN R. CONNER –Chair**  
Parasec

**WALTER DI MANTOVA**  
Los Rios Community College Dist.

**MICHAEL DOURGARIAN**  
Asher College

**ANN EDWARDS**  
Department of Human Assistance

**DIANE FERRARI**  
Employment Development Department

**KEVIN FERREIRA**  
Sacramento-Sierra Building & Construction  
Trades Council

**TROY GIVANS**  
County of Sacramento, Economic  
Development

**DAVID W. GORDON**  
Sacramento County Office of Education

**JASON HANSON**  
Sierra Pacific Home and Comfort, Inc.

**LISA HARR**  
Vision Service Plan

**BARBARA HAYES**  
Sacramento Area Commerce & Trade  
Organization

**THOMAS P. KANDRIS**  
Package One

**MATTHEW KELLY**  
Northern California Construction Training

**GARY R. KING – First Vice Chair**  
SMUD

**DANIEL KOEN**  
California Teachers Association

**KATHY KOSSICK**  
Sacramento Employment & Training Agency

**FRANK A. LOUIE**  
Xerox Corporation

**SUSAN MANSFIELD**  
A. Teichert & Son, Inc.

**ELIZABETH MCCLATCHY**  
The Safety Center, Inc.

**DENNIS MORIN**  
Sacramento Area Electrical Training Center

**DR. JENNI MURPHY**  
California State University, Sacramento

**ROGER NIELLO**  
Sacramento Metropolitan Chamber of  
Commerce

**JAY ONASCH**  
California Department of Rehabilitation

**KIM PARKER**  
California Employers Association

**MARTHA PENRY**  
California School Employees Association

**DEBORAH PORTELA**  
Casa Coloma Health Care Center

**LORENDIA T. SANCHEZ**  
California Indian Manpower Consortium

**ANETTE SMITH-DOHRING**  
Sutter Health – Sacramento Sierra Region

**MICHAEL R. TESTA**  
Sacramento Convention & Visitors Bureau

**DR. DEBORAH J. TRAVIS**  
Cosumnes River College

**DALE WALDSCHMITT**  
Pacific Coast Companies, Inc.

**TERRY A. WILLS, ESQ.**  
Cook Brown, LLP

**RICK WYLIE – Secretary/Treasurer**  
Beutler Corporation

**DAVID P. YOUNGER**  
Lionakis Beaumont Design Group



## SACRAMENTOWORKS

### SPECIAL MEETING OF THE SACRAMENTO WORKS, INC. BOARD

**DATE:** Wednesday, November 19, 2014

**TIME:** 8:00 a.m.

**LOCATION:** SETA Board Room  
925 Del Paso Blvd.  
Sacramento, California 95815

While the Sacramento Works, Inc. Board welcomes and encourages participation in the Sacramento Works, Inc. meetings, it would be appreciated if you would limit your comments to five minutes so that everyone may be heard. Matters under the jurisdiction of the Sacramento Works, Inc. Board and not on the posted agenda may be addressed by the general public following completion of the regular agenda. The Sacramento Works, Inc. Board limits testimony on matters not on the agenda to five minutes per person and not more than fifteen minutes for a particular subject. Meeting facilities are accessible to persons with disabilities. Requests for Assisted Listening Devices or other considerations should be made through the Clerk's office at (916) 263-3827. This document and other Board meeting information may be accessed through the Internet by accessing the SETA home page: [www.seta.net](http://www.seta.net).

## A G E N D A

## PAGE NUMBER

### I. Call to Order/Roll Call

➔ Introduction of New Board Member: **Walter DiMantova**,  
Los Rios Community College District

➔ Member Spotlight: Jay Onasch, Department of Rehabilitation

### II. Consent Item (2 minutes)

A. Approval of Minutes of the September 24, 2014 Meeting 1-6

### III. Discussion/Action Items (30 minutes)

A. Approval to Submit a Request to Transfer Workforce Investment Act (WIA) Dislocated Worker Funds to Adult Funds, Program Year (PY) 2014-15 7

<b>IV.</b>	<b><u>Information Items</u></b> (15 minutes)	
A.	Review of Relationship Between SETA and the Sacramento Works Workforce Investment Board (Phil Cunningham/Kathy Kossick)	8-10
B.	Workforce Innovation and Opportunity Act - Summary of Changes (Robin Purdy)	11-14
C.	Update on Workforce Accelerator Grant	15
D.	Dislocated Worker Report (William Walker)	16-17
E.	Employer Recruitment Activity Report (William Walker)	18-26
F.	Unemployment Update/Press Release from the Employment Development Department (Robin Purdy)	27-40
G.	Committee Updates	41
	✓ Youth Council (Matt Kelly)	
	✓ Planning/Oversight Committee (Anette Smith-Dohring)	
	✓ Employer Outreach Committee (Larry Booth)	
	✓ Board Development Committee (Terry Wills)	
<b>V.</b>	<b><u>Other Reports</u></b>	42
1.	Chair	
2.	Members of the Board	
3.	Counsel	
4.	Public Participation	
<b>VI.</b>	<b><u>Adjournment</u></b>	

**DISTRIBUTION DATE: WEDNESDAY, NOVEMBER 12, 2014**

# Sacramento Works, Inc. Local Workforce Investment Board Strategic Plan

Sacramento Works, Inc., the local Workforce Investment Board for Sacramento County, is a 41-member board charged with providing policy, planning and oversight for local workforce development initiatives.

## **Vision:**

Building a dynamic workforce for the Sacramento Region.

## **Mission:**

Sacramento Works partners with the workforce community to serve regional employment needs.

## **Goals:**

### **Goal 1 (Planning/Oversight Committee):**

Prepare customers for viable employment opportunities and career pathways in the region by improving the one stop career center system.

### **Goal 2 (Employer Outreach Committee):**

Support regional employers' efforts to hire, train, and transition employees by enhancing and communicating the availability and value of Sacramento Works' employer and business services.

### **Goal 3 (Youth Council):**

Prepare youth to thrive and succeed in the regional workforce by providing relevant work readiness and employment programs and engaging regional employers and academia.

*(Adopted 5/25/11)*

ITEM II-A – CONSENT

APPROVAL OF MINUTES OF THE SEPTEMBER 24, 2014 MEETING

BACKGROUND:

Attached are the minutes of the September 24, 2014 meeting for review.

RECOMMENDATION:

That your Board review, modify if necessary, and approve the attached minutes.

## **REGULAR MEETING OF THE SACRAMENTO WORKS, INC. BOARD**

### Minutes/Synopsis

SETA Board Room  
925 Del Paso Blvd.  
Sacramento, California

Wednesday, September 24, 2014  
8:00 a.m.

**I. Call to Order/Roll Call:** Ms. Kim Parker called the meeting to order at 8:02 a.m.

→ Introduction of New Board Members: ***Dr. William Karns***, Los Rios Community College District: Dr. Karns expressed his appreciation in joining the board.

Members Present: Larry Booth, Bill Camp, Lisa Clawson, Lynn Conner, Mike Dourgarian, Ann Edwards, Diane Ferrari, Lisa Harr, Tom Kandris, Dr. William Karns, Gary King, Daniel Koen, Kathy Kossick, Elizabeth McClatchy, Dennis Morin, Dr. Jenni Murphy, Roger Niello, Kim Parker, Martha Penry, Maurice Read, Lorenda Sanchez, Anette Smith-Dohring, Dr. Deborah Travis, Dale Waldschmitt, Terry Wills, Rick Wylie, David Younger

Members Absent: Brian Broadway, Joycelynn Brown, Paul Castro, Troy Givans, David Gordon, Jason Hanson, Barbara Hayes, Matt Kelly, Frank Louie, Susan Mansfield, Jay Onasch, Deborah Portela, Mike Testa.

→ Member Spotlight: Gary King, SMUD provided an overview of SMUD, their programs, and the number of community projects in which they participate. Ms. McClatchy stated that SMUD is located in Safetyville, USA and by the end of the year, they will have a solar display and wind turbine to help children learn about renewable energy.

**II. Consent Item**

A. Approval of Minutes of the July 23, 2014 Meeting

The minutes were reviewed; no questions or corrections.

Moved/Camp, second/Koen, to approve the July 23, 2014 minutes as distributed.

Roll call vote:

Aye: 25 (Booth, Camp, Clawson, Conner, Dourgarian, Edwards, Ferrari, Harr, Kandris, Karns, King, Koen, Kossick, McClatchy, Murphy, Niello, Parker, Read, Sanchez, Smith-Dohring, Travis, Waldschmitt, Wills, Wylie, Younger)

Nay: 0

Abstentions: 1 (Penry)

**III. Discussion/Action Items**

A. Election of Officers

Ms. Parker stated that she and the Nominating Committee (Ms. McClatchy and Ms. Kossick) met to review officer recommendations. The Nominating Committee recommends board officers as follows:

Chair: Ms. Lynn Conner

First Vice-Chair: Gary King

Second Vice-Chair: Bill Camp

Secretary/Treasurer: Rick Wylie

Moved/Dourgarian, second/McClatchy, to approve the officer nominees as presented.

Aye: 26 (Booth, Camp, Clawson, Conner, Dourgarian, Edwards, Ferrari, Harr, Kandris, Karns, King, Koen, Kossick, McClatchy, Murphy, Niello, Parker, Penry, Read, Sanchez, Smith-Dohring, Travis, Waldschmitt, Wills, Wylie, Younger)

Nay: 0

Abstentions: 0

B. Approval of Local Workforce Investment Area Performance Goals, PY 2014-15

Ms. Robin Purdy reviewed this board item. If the third and fourth quarter data comes in that may potentially impact our numbers, staff can re-negotiate the performance goals. The performance goals presented for approval are a step up from last year's goals. In terms of real numbers, it's about the economy is coming back and more employers are hiring.

The Planning/Oversight Committee asked for the performance measures for the region and the state as comparison; this report will be ready at the next meeting.

Moved/Camp, second/Ferrari, to approve the performance goals as outlined above for the Workforce Investment Act (WIA) Adult, Dislocated Worker, and Youth programs for PY 2014-15, with the understanding that the local area can renegotiate with the California Workforce Investment Board at the 2013-14 program year end, if necessary .

Aye: 26 (Booth, Camp, Clawson, Conner, Dourgarian, Edwards, Ferrari, Harr, Kandris, Karns, King, Koen, Kossick, McClatchy, Murphy, Niello, Parker, Penry, Read, Sanchez, Smith-Dohring, Travis, Waldschmitt, Wills, Wylie, Younger)

Nay: 0

Abstentions: 0

C. Approval of Submission of Project Slingshot: Solving Employment Challenges through Regional Collaboration

Mr. Tom Kandris, Ms. Anette Smith-Dohring, Mr. Roger Niello, Mr. Dave Butler, Ms. Lorenda Sanchez, and Ms. Joycelynn Brown were acknowledged and thanked for their work in the recent convenings.

Ms. Parker would like to form an ad hoc committee to work the SlingShot collaboration. Ms. Kossick stated that those interested can contact her, Ms. Purdy, or the Board Clerk.

Ms. Smith-Dohring left at 8:44 a.m.

Mr. Niello reported that the Small Business Administration is in the process of doing a major retooling of their Small Business Development Center efforts in an eight county region. The Metro Chamber submitted a proposal in conjunction with Sac State for SBA funding. This is putting a focus on the demand for labor rather than the supply for labor.

Moved/Camp, second/McClatchy, to approve submitting a Regional SlingShot proposal (in collaboration with North Central Counties WIB, Yolo County WIB and Golden Sierra WIB and a variety of regional stakeholders) to the California Workforce Investment Board

Aye: 25 (Booth, Camp, Clawson, Conner, Dourgarian, Edwards, Ferrari, Harr, Kandris, Karns, King, Koen, Kossick, McClatchy, Murphy, Niello, Parker, Penry, Read, Sanchez, Travis, Waldschmitt, Wills, Wylie, Younger)

Nay: 0

Abstentions: 0

#### **IV. Information Items**

##### **A. Media Coverage Summary for the Period January 1, 2014 – June 30, 2014**

Ms. Carpenter reviewed the report and stated that a lot of new employers were recruited from the new campaign. She received a lot of feedback and response from the placement unit. Mr. Niello reported that he has heard several radio spots.

##### **B. Workforce Innovation and Opportunity Act - Summary of Changes**

Dr. Murphy spoke of the Meeting of the Minds conference where there was a call for unified planning. Ms. Conner stated that it was a great opportunity for us to have our impact in the region. Ms. Kossick stated that if any board member is interested, the California Workforce Association will be hosting a six-hour training session on the WIOA on October 30. Attendees will be going over the new Act in detail. Board members were invited to attend.

##### **C. Dislocated Worker Report: Mr. William Walker reported that dislocations are low. He recently received a notice that the Department of Corrections will be laying off staff at some of their facilities.**

##### **D. Employer Recruitment Activity Report: No additional report.**

E. Unemployment Update/Press Release from the Employment Development Department: No additional report. Ms. Purdy introduced George Marley, the Labor Market Information consultant. The August numbers came in at 7.0%.

F. **Committee Updates**

- ✓ Youth Council: Ms. Carpenter reported on the last Youth Council meeting, and stated Mr. Waldschmitt joined the Youth Council. The Youth Council reviewed the Career Pathways program. There are 10 career pathways in the region.
- ✓ Planning/Oversight Committee: Ms. Conner stated that with her taking on duties of board Chair, she stepped down as Chair of the committee. This committee has primarily been working on the SlingShot proposal and working on reviewing documents.
- ✓ Employer Outreach Committee: Mr. Booth announced that the meeting will be immediately after the board meeting and vendors will be pitching their marketing proposals to the committee.
- ✓ Board Development Committee: Terry Wills thanked everyone that attended the Board Development retreat. She expressed appreciation for the engagement and was impressed with the dedication.

Ms. Parker stated that at the board retreat, there was discussion of having a board evaluation on how we are doing and what have we done lately/what have I done for this board? It allows board members to become more deeply engaged.

V. **Other Reports**

1. Chair: Mr. Parker stated that it was her pleasure serving as Chair of this board and she has seen our 'light bulb' shining brighter each year.
2. Members of the Board: Ms. Ferrari has veterans' job fair flyers and sign-up sheets for employers interested in participating in the job fair.

Mr. Camp thanked Ms. Parker for her great job.

3. Counsel: No report.
4. Public Participation: None.

VI. **Adjournment:** The meeting was adjourned at 9:06 a.m.



### ITEM III - A - ACTION

#### APPROVAL TO SUBMIT A REQUEST TO TRANSFER WORKFORCE INVESTMENT ACT (WIA) DISLOCATED WORKER FUNDS TO ADULT FUNDS, PROGRAM YEAR (PY) 2014-15

##### BACKGROUND:

This item addresses the transfer of Workforce Investment Act (WIA) Adult and Dislocated Worker funds for Program Year (PY) 2014-15. Based on a waiver submitted by the California Workforce Investment Board (CWIB) and approved by the Department of Labor (DOL) on June 7, 2013, the Local Workforce Investment Areas (LWIA) may transfer up to 50 percent of the WIA formula adult funds and up to 50 percent of the dislocated worker funds allocated to the local area between the adult and dislocated worker funding streams. The DOL granted California an extension of the waiver through June 30, 2017, to permit an increase in the funds transfer limitation found in WIA Section 133(b)(4).

The WIA allows the transfer of funds between adult and dislocated worker funding streams in order to maximize customer service and provide local boards with greater flexibility to respond to changes in their local labor markets.

Staff is recommending that the Board approve a transfer of 50 percent of the WIA dislocated worker formula funds to the adult formula allocation for PY 2014-15. Each year, approximately 30 percent of eligible dislocated workers are served under SETA's WIA adult funding stream. By eliminating the labor-intensive eligibility, data collection, accounting and reporting procedures required when serving customers with dislocated worker funds, more effort can be focused on actual training and job development services.

The amount of dislocated worker funds to be transferred to the adult funding allocation will be \$1,986,752.

##### RECOMMENDATION:

Approve the submission to the State of California, EDD of a request to transfer \$1,986,752 in WIA dislocated worker formula funds to the WIA adult formula funding stream for PY 2014-15.

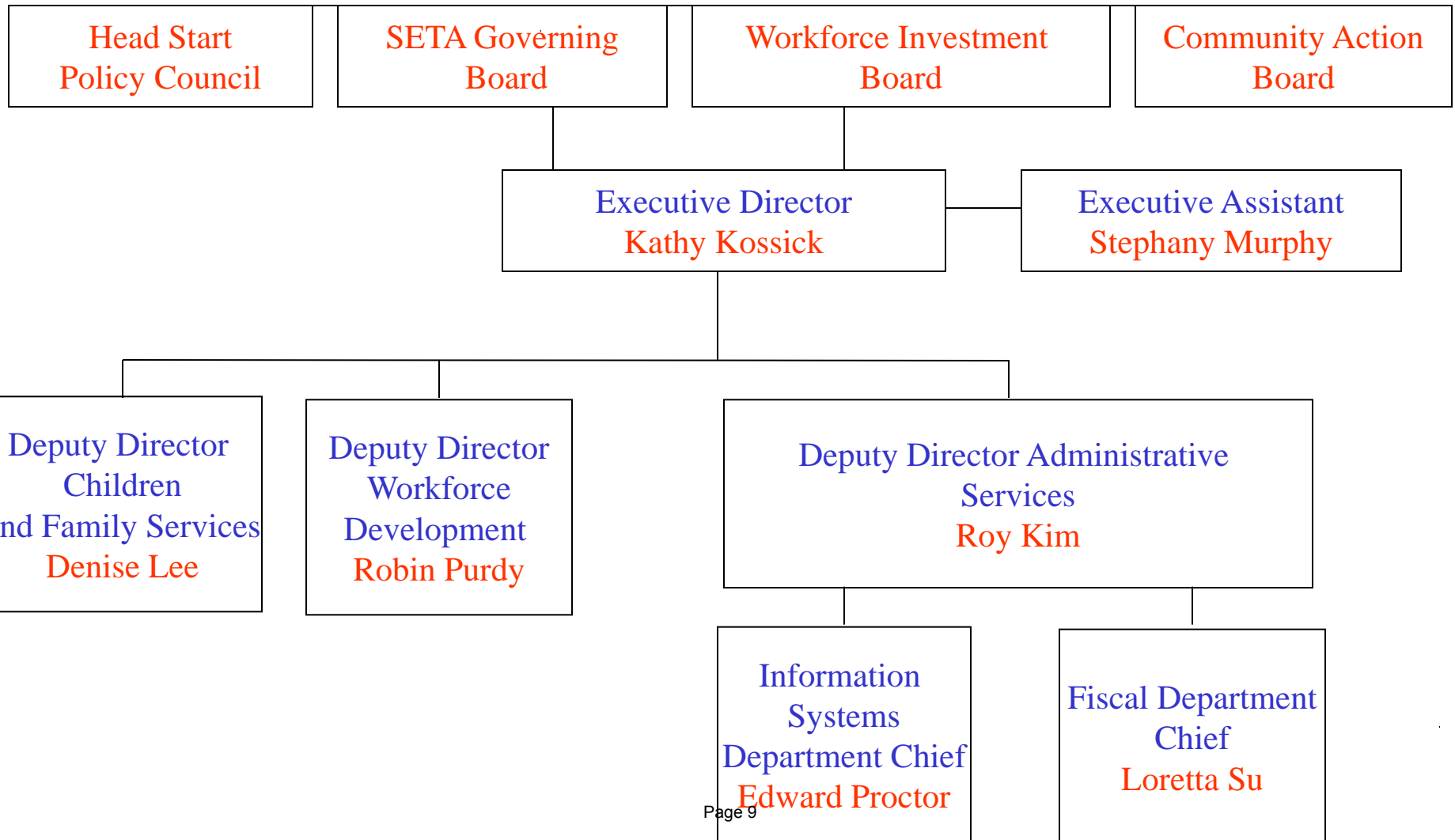
## ITEM IV-A - INFORMATION

### REVIEW OF RELATIONSHIP BETWEEN SETA AND THE SACRAMENTO WORKS WORKFORCE INVESTMENT BOARD

#### BACKGROUND:

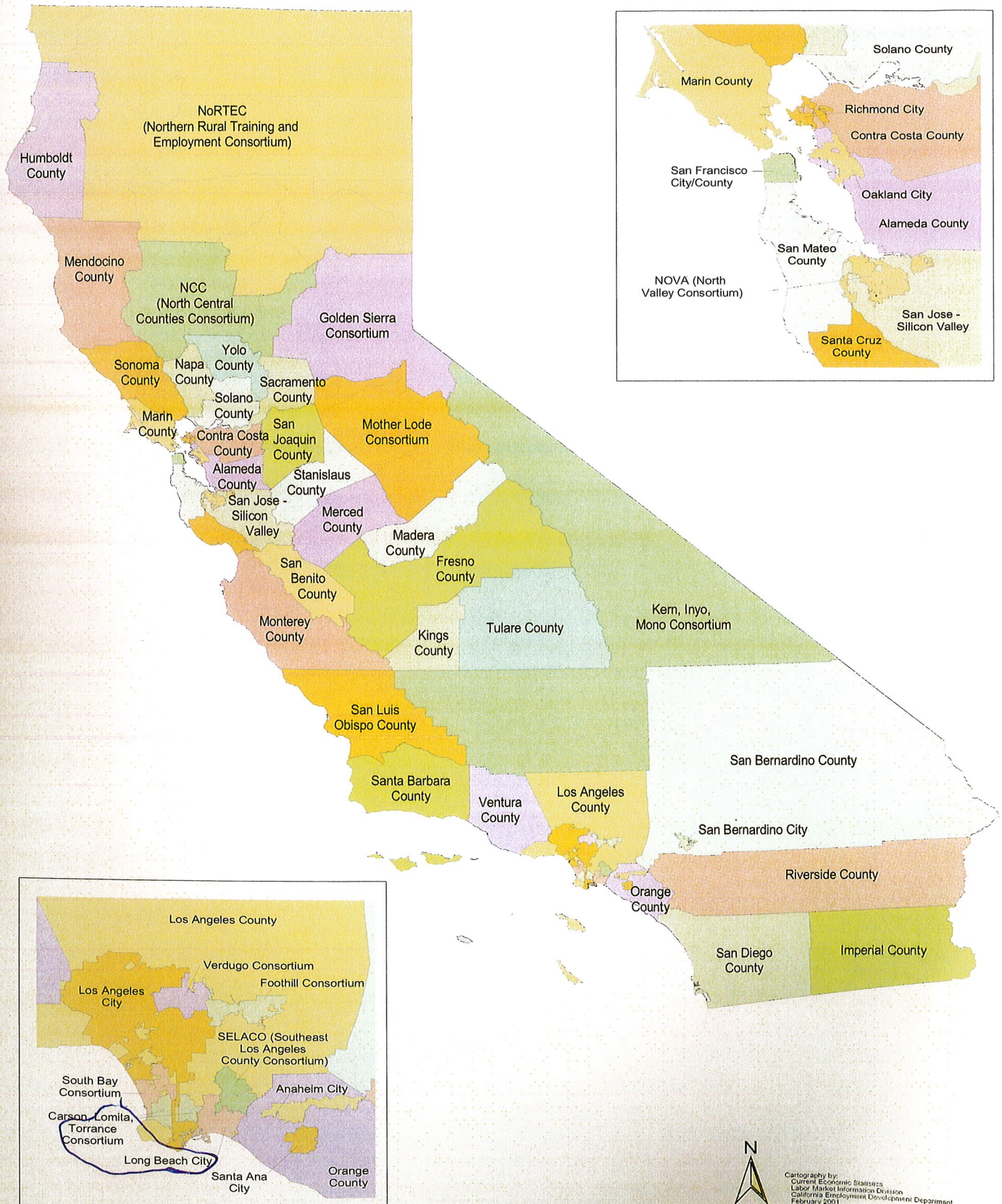
At the Board Development meeting in September, some members expressed a desire to better understand the functions and relationship of the Sacramento Employment and Training Agency and the Sacramento Works Workforce Investment Board. Executive Director Kathy Kossick and legal counsel Phil Cunningham will provide an overview for the Board.

# Executive Director's Office FY 2014-2015





# Local Workforce Investment Areas



Cartography by:  
 Current Economic Statistics  
 Labor Market Information Division  
 California Employment Development Department  
 February 2001

## ITEM IV-B - INFORMATION

### WORKFORCE INNOVATION AND OPPORTUNITY ACT - SUMMARY OF CHANGES

#### BACKGROUND:

The Planning/Oversight Committee will be responsible for the implementation of the Workforce Innovation and Opportunity Act (WIOA). At the November meeting, the committee began reviewing summaries of the Act. In mid-January, regulations will be published and implementation planning will begin.

Attached are two charts reflecting:

- Comparative Overall Analysis
- WIB to Workforce Development Boards Comparison

In addition, all members will receive an electronic version of the National Association of Workforce Boards publications “The Workforce Innovation and Opportunity Act (WIOA).”

Area	WIA/SB 293	WIOA
General	Workforce <u>Investment</u> Boards	Workforce <u>Development</u> Boards
	WIBs <i>operate separately</i>	WDBs <i>collaborate with <u>multiple partners</u></i>
	Local Planning	Regional Planning
	<b>Initial designation</b> two years after enactment. - Based on local area plan and high performance criteria	<b>Initial designation</b> of local areas (including certification of Boards) in 2016 and <b>subsequent designation</b> 2018 - Based on Performance and fiscal integrity in 2016, and <i>regional coordination/plan</i> in 2018
Membership	<i>Size dictated by local areas</i>	Intent is to <i>reduce Board size</i>
	<b>20 mandated</b> categories of representation	<b>8 mandated</b> categories of representation
	<u>At least 2</u> representatives required for 5 categories	<u>At least 1 rep</u> for 5 non-Business/Labor categories
	<b>15% Labor</b>	<b>20% Labor</b> (may include CBOs)
	51 max and <u>39 members minimum</u> (County Code)	No max and <u>19 members minimum</u> (10/4/5)
	<i>Mandated</i> representatives	Same <i>previously mandated</i> categories are now <i>optional</i>
	No requirement	<i>Geographic diversity</i> required
Committees	Only <u>Youth Council</u> required	<u>3 Standing Committees</u> allowed on Operations, Individuals with Disabilities and Youth
	11 <i>mandated categories for Public Members</i> on Youth Council	<i>Locally-decided number of committee members</i> with demonstrated experience and expertise
	<b>WIB members chair</b> and <b>compromise all committees</b> except Youth Council	Standing committees must be <b>chaired by WIB Members</b> , and <b>comprised of subject matter experts</b> .
Roles	<b>8</b> Statutory WIB Roles	<b>13</b> Statutory - 3 <i>identical</i> to WIA; 5 <u>expanded</u> ; 5 <b>new</b> (Local plan, workforce research and regional labor market analysis; convening/brokering/leveraging; employer engagement; career pathways development; proven and promising practices, technology, program oversight, negotiation of local performance accountability, selection of operator and providers, coordination with educational providers, budget/administration, and accessibility for individuals with disabilities.)



<b>Area</b>	<b>WIA</b>	<b>WIOA</b>
<b>Adult</b>	Core Services	Career Services with sequence eliminated
	13 mandated partners	15 mandated partners with TANF and Second Chance Act added with required cost sharing
	EDD and WIA operate separately	Co-location required with EDD
	Local branding	National 'America's Job Center' Brand
<b>Young Adult</b>	Same eligibility requirements for in- and out-of-school youth	Income eligibility eliminated for most out-of-school youth and age raised to 16-24
	30% of funding for out-of-school youth	At least 75% of funding for out-of-school youth
	No funding set aside	At least 20% of funds for work-based learning
	Emphasis on post-secondary enrollment	Performance outcomes
	Not mentioned in WIA	New allowable activities: financial literacy, education and entrepreneurial skills training
	Co-location with A/DW not required	Not required but critical to achieve performance
<b>Priority Populations</b>	Disabled one of many priorities	Clear mandate to serve disabled
<b>Performance</b>	Different measures-Youth & Adult	Six indicators aligned across programs
	Measured annually	Measured quarterly
	No business services metrics	Measures effectiveness serving employers
<b>Client Services</b>	Workforce stakeholders provide services within local area	Regional coordination across jurisdiction to provide services
	Job-seeker centric	Business-Employer centric
	Sequence of services prerequisite for training (A/DW)	Sequence of services eliminated (A/DW)
	Emphasis on job readiness/placement	Job Driven training/work experience in high growth sectors with Career Pathways

<b>Business-Employer Services</b>	Limited Services to businesses	Requires services to businesses in High Growth Sectors
<b>WIB</b>	Local Planning	Regional Planning
	Certification based on area plan	Initial designation in 2016 of local areas based on performance, fiscal integrity and in 2018 regional coordination and plan
	WIBs operate separately	WIBs collaborate regionally with multiple partners
	Business majority, 10/15 labor and 17 categories of representation	Business majority, economic development, adult and post-secondary education, rehab, Wagner Peyser, and minimum 20% from labor



ITEM IV-C – INFORMATION

UPDATE ON WORKFORCE ACCELERATOR GRANT

BACKGROUND:

Staff will provide an update on the activities and success of the Workforce Accelerator Grant.

ITEM IV-D – INFORMATION  
DISLOCATED WORKER REPORT

BACKGROUND:

The most current dislocated worker update is attached; staff will be available to answer questions.

STAFF PRESENTER: William Walker

## Dislocated Worker Information PY 2014/2015

The following is an update of information as of October 27, 2014 on the Worker Adjustment and Training Notification (WARN) notices and Non WARN notifications in Sacramento County.

	MONTH RECEIVE NOTICE	COMPANY AND ADDRESS	WARN STATUS	# OF AFFECTED WORKERS	SETA'S INTERVENTION
Official	6/6/2014	<b>North Sacramento Chrysler Jeep Dodge, LLC</b> 3610 Fulton Blvd. Sacramento, CA 95821	8/3/2014	66	No Job Loss
Official	7/15/2014	<b>Intuit Inc.</b> 620 Coolidge Dr. Suite 200 Folsom, CA 95630	9/15/2014	15	7/30/2014
Official	7/16/2014	<b>Video Products Distributors Inc.</b> 150 Parkshore Dr. Folsom, CA 95630	10/12/2014	90	8/19/2014 8/20/2014
Unofficial	7/16/2014	<b>Orchard Supply Hardware</b> 3350 Arden Way Sacramento, CA 95825	10/10/2014	50	8/26/2014 8/27/2014
Official	8/27/2014	<b>Verizon Wireless</b> 295 Parkshore Dr. Folsom , CA 95630-4716	1/27/2014	372	Relocated
Official	10/6/2014	<b>Prometheus</b> 2345 Northrop Ave. Sacramento, CA 95825	12/31/2014	2	Pending
Official	10/14/2014	<b>Harrold Ford</b> 1535 Howe Avenue Sacramento, CA 95825	12/16/2014	120	Pending
Official	10/15/2014	<b>Volcano</b> 2870 Kilgore Rd Rancho Cordova, CA 95670	12/16/2014	170	Pending
			<b>Total # of Affected Workers</b>	885	

ITEM IV-E – INFORMATION

EMPLOYER RECRUITMENT ACTIVITY REPORT

BACKGROUND:

Staff at Sacramento Works Job Centers and internal Employer Services staff work with local employers to recruit qualified employees. The most current update is attached.

Mr. William Walker will be available to answer questions.

STAFF PRESENTER: William Walker

**Employment Recruitment Activity Report**

July 1 -October 27, 2014

EMPLOYER	CRITICAL CLUSTERS	JOBS	NO OF POSITIONS
Critical Occupational Clusters Key: 1=Administrative & Support Services; 2=Architecture & Engineering; 3=Construction; 4=Healthcare & Supportive Service; 5=Human Services; 6=Information Technology; 7= Installation, Maintenance & Repair; 8=Tourism/Hospitality; 9=Transportation & Production; 10=Non-Critical Occupations			
A Plus Construction	7	Finish Carpenter	4
	7	Window Installer	4
A+ Pro Cleaning LLC	1	Janitorial/House Cleaner	1
	1	Office Assistant	1
Able Force	1	Customer Service Representative	11
	1	Intake Rep III	10
Action Military Surplus	1	eBay Technician	1
	10	Retail Clerk	1
Acorn Aboricultural services,inc.	10	Tree Climber/Trainee	2
Adecco Employment Services	9	Almond Sorter	50
	9	Certified Forklift Driver - Warehouse High Stack	25
	3	General Laborer	50
	9	Lift Truck Driver - DC	25
	9	Lift Truck Driver - Production	25
	1	Quality Control Inspector	1
	1	Sanitation Worker	25
Alchemist Community Development Corporation	1	Administrative Manager	1
All In Energy	1	Account Manager	1
Area 4 Agency on Aging	1	Office Specialist II	1
Autobahn Performance Inc	1	Receptionist Bi-Lingual Spanish/English	1
B&R Head & Block Repair	7	Diesel/Auto Engine Head and Block Repair Technician/Machinist	2
Backflow Distributors	3	Warehouse/Forklift Operator	1
Better Life Children Services	5	Social Worker	1
Beutler Corporation	1	Administrative Assistant	1
	10	Career Developer	1
	1	Customer Service Representative	1
	10	Inventory Controller	1
	9	Manufacturing	10
	7	Retrofit Installer	1
	3	Solar Engineer & Planning Tech	1
Breathe California	1	Communications Associate	1
Building Materials Distribution Inc.	9	Class A Truck Driver	1
	9	Part-Time Warehouse Worker	1
	7	Service Technician and Carpenter	1
	10	Stock Cutter	1
Caballo Bronco Barber Styling	10	Barber/Styling Salon Cosmetologist	1
Cal Pac Gutters	7	Gutter Installer	1
California Custom Coatings	7	Installer	2
California Special Districts Association	1	Member Services Representative	1
Capital Social Services	1	ILS Instructor	2
Certified Property Rescue	7	Property Damage Restoration Production Team Leader or Technician	1

**Employment Recruitment Activity Report**

July 1 -October 27, 2014

EMPLOYER	CRITICAL CLUSTERS	JOBS	NO OF POSITIONS
Critical Occupational Clusters Key: 1=Administrative & Support Services; 2=Architecture & Engineering; 3=Construction; 4=Healthcare & Supportive Service; 5=Human Services; 6=Information Technology; 7= Installation, Maintenance & Repair; 8=Tourism/Hospitality; 9=Transportation & Production; 10=Non-Critical Occupations			
CEVA Logistics US INC	1	Customer Service Representative II	1
Child Action	6	Programmer	1
Children All Around	1	Children Assistant to Teacher	1
Chime Solutions	10	Customer Service Representatives	40
CLASS A POWDERCOAT, INC.	10	Operations Manager	1
ClearPlex Corporation	9	Film Molder and Packer	50
Community Link Capital Region	6	Database Program Manager	1
Cokeva, Inc.	3	Associate Engineer	2
Craig Cares	4	Caregiver/ Personal Attendant	10
Creative Living Options	1	Direct Support Professional / Personal Attendant	50
	1	General Administrative Assistant	1
Crossroads Facility Services	10	Landscape Crew Lead	1
	10	ON-CALL Janitor	1
Curves Jenny Craig	10	Health and Wellness Consultant	1
D3 LED, LLC	1	Buyer/Planner	1
	3	Drafting Specialist	1
Delta Protective Services	1	Security Guard	10
Developmental Disabilities Service Organization	1	Direct Support Professional	1
	7	Maintenance Technician I	1
Dickeys Barbecue	10	Assistant Manager	1
	10	Food Service Counter Clerk	15
Eastman Building Products	9	Driver/Yardman--Lumber Yard	1
	1	Lumber Sales	1
Elica Health Center	4	Medical Assistant	8
Engineered Monitoring Systems	2	Technician Apprentice	2
	2	Journeyman / Lead Tech	2
Excel Managed Care & Disability Services, Inc.	1	Office Clerk	1
Eventus Solutions Group	1	Call Center Representative	1
EverRae Association Services, Inc.	7	General Maintenance	1
Express Employment Professionals	9	Production Worker	150
FedEx Ground 958	1	Linehaul Coordinator	1
	1	Maintenance Service Manager	1
	1	Operations Manager	1
	9	Package Handler	50
	1	Special Assignment Clerk	2
Floor & Decor	1	Customer Service Associate	8
	1	Inventory Control Specialist	1
	9	Warehouse Specialist	1
FolioDynamix	10	DB2DBA	1
	10	Overlay Manager I	1
Frito-Lay	9	Detailer	1
	10	Merchandiser	1

**Employment Recruitment Activity Report**

July 1 -October 27, 2014

EMPLOYER	CRITICAL CLUSTERS	JOBS	NO OF POSITIONS
Critical Occupational Clusters Key: 1=Administrative & Support Services; 2=Architecture & Engineering; 3=Construction; 4=Healthcare & Supportive Service; 5=Human Services; 6=Information Technology; 7= Installation, Maintenance & Repair; 8=Tourism/Hospitality; 9=Transportation & Production; 10=Non-Critical Occupations			
G&K Services	9	Route Relief - Hourly	1
General Produce Company	1	Order Selectors	6
	9	Commercial Driver	5
	1	Receptionist	1
Genesis ATC	10	Resource Recovery Specialist	5
	9	Warehouse Attendant	1
Global Touchpoints Inc	1	HR Assistant	1
Gourmet Demo Svc	10	Demo Associate	6
GroundWorks Campaigns	1	Canvasser	50
GSI	10	Telemarketing Fundraiser	10
HORIZON PERSONNEL SERVICES	9	Class A Driver	10
	9	Class C Driver	50
	7	Maintenance Mechanic	2
	9	Order Picker	10
	9	Warehouse Worker	10
Hp Hood	9	Dairy Manufacturing	3
	7	Maintenance Engineer	1
HR Management, Inc.	1	Admissions/Records Clerk III	1
	1	Office Clerk	50
Hunter Douglas Fabrication	9	Entry Level Production Associate	50
HYLTON SECURITY INCORPORATED	1	Security Guard	1
Innovative Maintenance Solutions, Inc.	7	General Maintenance & Lighting Technician	1
	7	Lighting/Electrical Technician	1
	7	Roofing Technician	2
	7	Utility/Carpet & Floor Lead	3
InSync Consulting Services LLC	1	Customer Service Professional	100
J&L TeamWorks	1	Call Center Representative	10
J4 Systems	6	Microsoft Dynamics AX 2013	1
	6	Network Engineer	3
J Williams Staffing	1	Community Manager	1
Kings Arena Limited Partnership, LP	1	Box Office Attendant	10
	10	Janitor Custodian	10
	10	Merchandise Seller	7
	10	Parking Attendant	10
	10	Security Officer	25
L-3 Narda Microwave-West	1	Program Manager	1
LCA SERVICES	1	Lead Case Manager	1
Learn It Systems Llc	1	Program Specialist	1

**Employment Recruitment Activity Report**

July 1 -October 27, 2014

EMPLOYER	CRITICAL CLUSTERS	JOBS	NO OF POSITIONS	
Critical Occupational Clusters Key: 1=Administrative & Support Services; 2=Architecture & Engineering; 3=Construction; 4=Healthcare & Supportive Service; 5=Human Services; 6=Information Technology; 7= Installation, Maintenance & Repair; 8=Tourism/Hospitality; 9=Transportation & Production; 10=Non-Critical Occupations				
Los Rios Community College District	1	Account Clerk II	1	
	1	Administrative Assistant I	2	
	1	Admissions/Records Clerk III	2	
	1	Admissions/Records Evaluator I	1	
	1	Admissions/Records Evaluator II	1	
	1	Architectural Design Technology Assistant Professor	1	
	1	Athletic Counselor	1	
			Audio/Visual Production and Maintenance Technician II	1
	1		Bookstore Stock Clerk	1
	1		Buyer III	1
	1		CalWORKs District-Wide Coordinator	1
	1		Chemistry Assistant Professor	1
	1		Child Development Center Supervisor	1
	1		Clerk III	5
	1		College Receiving Clerk/Storekeeper	2
			Confidential Human Resources Specialist I	1
	1		Confidential Human Resources Specialist III	1
	1		Confidential Internal Auditor	1
	1		Counseling Clerk II	1
	1		Counselor	1
	1		Counselor/ Articulation Officer	1
	1		Dean of Counseling and Student Services	1
	1		Dean of Science, Mathematics and Engineering	1
	1		Dean of Technical Education	1
	1		Director of Institutional Research	1
	1		Director of Technical Services Information Technology	1
	1		Disabled Students Programs & Services Coordinator	1
	1		Electronics Technology Assistant Professor	1
	1		Financial Aid Clerk II	1
	1		Grant Coordination Clerk	1
	10		Graphic Designer	1
	1		Groundskeeper	1
	1		Head Coach for Intercollegiate Softball Adjunct Pool	1
1		Information Technology Application Systems Supervisor	1	
1		Information Technology Business/Technical Analyst II	2	
6		Information Technology Specialist I - Microcomputer Support	1	



**Employment Recruitment Activity Report**

July 1 -October 27, 2014

EMPLOYER	CRITICAL CLUSTERS	JOBS	NO OF POSITIONS
Critical Occupational Clusters Key: 1=Administrative & Support Services; 2=Architecture & Engineering; 3=Construction; 4=Healthcare & Supportive Service; 5=Human Services; 6=Information Technology; 7= Installation, Maintenance & Repair; 8=Tourism/Hospitality; 9=Transportation & Production; 10=Non-Critical Occupations			
Los Rios Community College District	1	Instructional Assistant - Aeronautics	1
	1	Instructional Assistant - Communication, Visual and Performing Arts	1
	1	Instructional Assistant - Foreign Language	1
	1	Instructional Assistant - Learning Resources	1
	1	Instructional Assistant - Music	1
	1	Instructional Assistant - Sign Language Studies	1
	1	Instructional Assistant - Writing/English/Reading	2
	1	Instructional Services Assistant II	1
	1	Laboratory Technician - Science	3
	1	Laboratory Technician - Science (Chemistry)	1
	1	Lead Library Media Technical Assistant	1
	1	Library Area - Special Project - Instructional Assistant - Library	1
	1	Library/Media Technical Assistant	1
	1	Nursing (RN/LVN) Assistant Professor	1
	1	Outreach Clerk	1
	1	Police Officer	1
	6	Programmer I	1
	6	Programmer II	1
	1	Real Estate/Management (Business) Assistant Professor	1
	10	Research Analyst	1
	1	Research Analyst	1
	1	Senior Information Technology Systems/Database Administrator	1
	6	Senior Information Technology Technician - Lab/Area Microcomputer Support	1
	6	Senior IT Technician - Lab/Area Microcomputer Support	1
	1	Speech Communication Assistant Professor	1
	1	Student Life Supervisor	1
	1	Student Personnel Assistant - Davis Outreach Program	1
	1	Student Personnel Assistant - Extended Opportunity Programs and Services	1
	1	Student Personnel Assistant - Internship Developer	1

**Employment Recruitment Activity Report**

July 1 -October 27, 2014

EMPLOYER	CRITICAL CLUSTERS	JOBS	NO OF POSITIONS
Critical Occupational Clusters Key: 1=Administrative & Support Services; 2=Architecture & Engineering; 3=Construction; 4=Healthcare & Supportive Service; 5=Human Services; 6=Information Technology; 7= Installation, Maintenance & Repair; 8=Tourism/Hospitality; 9=Transportation & Production; 10=Non-Critical Occupations			
Los Rios Community College District	1	Student Success and Support Program	1
	1	Vice President of Student Services	1
	6	Senior Information Technology Technician - Lab/Area Microcomputer Support	1
	6	Senior IT Technician - Lab/Area Microcomputer Support	1
	1	Speech Communication Assistant Professor	1
	1	Student Life Supervisor	1
	1	Student Personnel Assistant - Davis Outreach Program	1
	1	Student Personnel Assistant - Extended Opportunity Programs and Services	1
	1	Vice President of Student Services	1
Markstein Beverage Co.	9	Class A Commercial Delivery Driver	1
	9	Delivery Helper	1
	10	Merchandiser	1
	9	Night Warehouse Associate	1
McConnell Jones Lanier & Murphy LP	1	Cook	1
	1	On-Call Safety/Security Advisor	6
	1	Substitute Vocational Instructor	3
	1	Substitute Academic Instructor	3
Mexifoods Inc	9	Delivery Driver	2
Michael's Transportation Service	9	Bus Driver	20
MJ Communications, INC	7	Installers	1
Mutual Housing California	1	Accounting Supervisor	1
N T Engineering	7	CNC Machine Setup	2
Old Dominion Freightlines	9	Short line & Team Drivers	16
Opening Doors, Inc	1	Anti-Trafficking Coalition Manager	1
	1	Director of Operations	1
Patriot National Insurance Group	1	Senior Claims Adjuster	2
Pennell Consulting, Inc.	6	Low Voltage Security Electronics Engineer	1
Pinnacle Workforce Logistics	9	Freight Handlers	15
	1	Janitor	5
PRIDE Industries	1	Custodian	3
Pro Pacific Fresh	9	Class A or B Route Driver	2
ProctorU	1	Exam Proctor	25
	1	French Language Proctor	25
Puddles	1	Sales Associate	1
Ready-Set-Go Children's Center	1	Preschool Teacher	4
Resource Staffing Group	10	Team Leader	1
Ryder Transportation		Class A Driver	15
Sacramento Covered		Health Navigator/Certified Enrollment Counselor	5

**Employment Recruitment Activity Report**

July 1 -October 27, 2014

<b>EMPLOYER</b>	<b>CRITICAL CLUSTERS</b>	<b>JOBS</b>	<b>NO OF POSITIONS</b>
Critical Occupational Clusters Key: 1=Administrative & Support Services; 2=Architecture & Engineering; 3=Construction; 4=Healthcare & Supportive Service; 5=Human Services; 6=Information Technology; 7= Installation, Maintenance & Repair; 8=Tourism/Hospitality; 9=Transportation & Production; 10=Non-Critical Occupations			
Sacramento Loaves & Fishes	1	Montessori Preschool And Nap Assistant	1
	1	Teacher	1
Sacramento Employment and Training Agency	1	Accountant I	1
	1	Early Head Start Educator	1
	1	Head Start Teacher	1
	1	Family Services Worker Range III	1
	1	Personnel/Human Resources Department Chief - Exempt	1
	1	Senior Accountant	1
	1	Site Supervisor	1
	1	Workforce Development Professional Range 2	1
Sacramento Regional Transit District	7	Facilities Maintenance Mechanic	1
Samarrah Independent Living Services	1	Pension and Retirement Administrator	1
	1	Life Skills Educator/ILS	2
SCIS	1	Armed Security Officer	30
Safety Dynamics Corporation	1	Unarmed security guard	10
SAN JUAN UNIFIED SCHOOL DISTRICT	1	Substitute Instructional Assistant II & III	20
Segovia Carehome	4	Direct Care Staff	3
Select Staffing	9	Assembler	5
	1	Call Center Representative & Data Entry Clerk	200
	9	Graveyard Forklift Driver	1
	10	Sorter	5
Serenity Respite	4	Respite Caregiver	25
Sierra Asphalt Inc	7	Heavy Duty Mechanic/Welder	1
Sierra Wes Wall Systems Inc	3	Drywall and Insulation Installers	10
Smart & Final Stores	1	Service Clerk	30
	1	Store Associate (Part-Time)	40
Softsol Resources INC.	1	Document Preparation & Scanning Operator	1
Stans Auto & Towing	9	Tow Operator	2
Strategies To Empower People STEP	1	Job Coach	10
Subway #25628	1	Sandwich Artist	1
Supply	1	Assistant Manager Retail	1
Teledyne Microwave Solutions	9	Assembler 1	1
	2	Electronic Engineer	1
	9	Product Finisher	1
	9	Stockroom Clerk	1
	9	Technician/Brazing Furnace Operator	1
The Spanish Immersion Program	1	Preschool Teacher	2
THR Cleaning Services	1	House Cleaning	2
		Specialist/Housekeeping Associate	

**Employment Recruitment Activity Report**

July 1 -October 27, 2014

EMPLOYER	CRITICAL CLUSTERS	JOBS	NO OF POSITIONS
Critical Occupational Clusters Key: 1=Administrative & Support Services; 2=Architecture & Engineering; 3=Construction; 4=Healthcare & Supportive Service; 5=Human Services; 6=Information Technology; 7= Installation, Maintenance & Repair; 8=Tourism/Hospitality; 9=Transportation & Production; 10=Non-Critical Occupations			
Tony's Fine Foods, Inc.	1	Accounts Receivable Specialist	1
	9	Class A Route Driver - West Sacramento	2
	9	Class C Delivery Driver	1
	9	Crane Support	3
	1	Dispatcher	1
	9	Forklift Operator - Graveyard Shift	1
	9	Forklift Operator Mid-Day Shift	1
	1	Human Resources Generalist	1
	6	IT Support Specialist II	1
	9	Loader	1
	9	Night Shipping Supervisor	1
	1	Order Selector - Swing Shift	5
	9	Order Selector - West Sacramento	8
	1	Pricing Specialist	1
	9	Regional Route Driver	1
United Site Services	1	Administrative Clerk I	1
US Solar Distributing	1	Account Manager	1
Voice Empowered Tech Org	1	Business Operational Professional	3
W C Stein Construction Corp	7	Service Plumber	2
Wendy's	7	Maintenance Technician	1
Western States Fire Protection	10	Designer	1
	10	Fire Extinguisher Technician	1
	7	Residential Fire Sprinkler Fitter	1
	1	Senior Designer / Project Manager	1
Wind Youth Services	5	On-Call Shelter Worker	1
	5	Shelter Program Coordinator	1
	5	Street Outreach Worker	1
Wollborg Michelson	9	Group Level Processor	50
Women's Empowerment	1	Childcare Coordinator	1
Yolo County Children's Alliance	1	STAR Readers Reading Coordinator	1
Z Squared Construction	3	Rough and Finish Carpenter, Drywall Installer, Door and Hardware Installer, Cabinet Installer	3
ZETA Communities	3	Carpenter - Rough & Finish	15
	3	Dry Wall Installer	5
	3	Electrician	5
	3	Plumber	5
<b>Total</b>			<b>1958</b>

ITEM IV-F- INFORMATION

UNEMPLOYMENT UPDATE/PRESS RELEASE FROM THE EMPLOYMENT  
DEVELOPMENT DEPARTMENT

BACKGROUND:

The unemployment rate for Sacramento County for the month of September was 6.6%.

Attached is a copy of a press release from the Employment Development Department breaking down the job losses and job creations for the regional area.

Staff will be available to answer questions.

STAFF PRESENTER: Robin Purdy

**SACRAMENTO-ARDEN-ARCADE-ROSEVILLE METROPOLITAN STATISTICAL AREA (MSA)  
(EL DORADO, PLACER, SACRAMENTO, AND YOLO COUNTIES)**

**Educational and health services led year-over job gains with 6,300-job increase**

The unemployment rate in the Sacramento-Arden Arcade-Roseville MSA was 6.6 percent in September 2014, down from a revised 6.9 percent in August 2014, and below the year-ago estimate of 8.1 percent. This compares with an unadjusted unemployment rate of 6.9 percent for California and 5.7 percent for the nation during the same period. The unemployment rate was 6.2 percent in El Dorado County, 5.8 percent in Placer County, 6.9 percent in Sacramento County, and 6.4 percent in Yolo County.

**Between August 2014 and September 2014**, combined employment located in the counties of El Dorado, Placer, Sacramento, and Yolo increased by 100 to total 893,500 jobs.

- Government led the month-over increase with a seasonal gain of 3,400 jobs. Local government education carried the industry, adding 3,900 jobs. State education added 300 jobs. The job gains were within seasonal norms where it is customary for schools to expand after the summer break.
- Educational and health services grew by 1,600 jobs. Health care and social assistance led the expansion with a 1,100 job increase. Private education picked up 500 jobs.
- Financial activities improved by 600 jobs, the largest gain since 2002. Historically this industry declines from August to September. Finance and insurance grew by 500 jobs, and real estate and rental and leasing added 100 jobs.
- Seven industries saw month-over job declines, led by leisure and hospitality's higher-than-average seasonal job reduction (down 3,700 jobs). Professional and business services dipped by 700 jobs, and trade, transportation, and utilities declined by 600 jobs.

**Between September 2013 and September 2014**, total jobs in the region increased by 18,300 or 2.1 percent.

- Educational and health services edged up by 6,300 jobs year over. Health care and social assistance continues to dominate the industry with a 6,200-job increase. Private education added 100 jobs for the year.
- Professional and business services expanded by 5,800 jobs. Professional, scientific, and technical services added 2,700 jobs since last September. Administrative and support and waste services also added 2,700 jobs for the year. Management of companies and enterprises improved by 400 jobs.
- Construction advanced by 2,900 jobs year over. Specialty trade contractors rose by 1,900 jobs. Construction of buildings added 200 over the year.
- Three industries saw job declines for the year. Leisure and hospitality dropped by 1,700 jobs, and other services and information each receded by 400 jobs.

**REPORT 400 C**  
**Monthly Labor Force Data for Counties**  
**September 2014 - Preliminary**  
 Data Not Seasonally Adjusted

COUNTY	RANK BY RATE	LABOR FORCE	EMPLOYMENT	UNEMPLOYMENT	RATE
<b>STATE TOTAL</b>	---	<b>18,759,200</b>	<b>17,459,000</b>	<b>1,300,100</b>	<b>6.9%</b>
ALAMEDA	10	789,800	745,000	44,700	5.7%
ALPINE	49	390	350	40	9.7%
AMADOR	30	15,960	14,800	1,160	7.3%
BUTTE	31	103,100	95,500	7,600	7.4%
CALAVERAS	33	19,320	17,840	1,480	7.7%
COLUSA	57	11,360	10,080	1,280	11.3%
CONTRA COSTA	10	543,900	512,800	31,100	5.7%
DEL NORTE	42	11,180	10,230	960	8.5%
EL DORADO	17	89,000	83,500	5,500	6.2%
FRESNO	48	451,400	408,600	42,900	9.5%
GLENN	45	13,160	12,020	1,140	8.7%
HUMBOLDT	23	57,600	53,800	3,800	6.5%
IMPERIAL	58	79,100	60,100	18,900	23.9%
INYO	19	8,960	8,400	560	6.3%
KERN	47	396,900	361,700	35,200	8.9%
KINGS	52	59,200	53,400	5,800	9.8%
LAKE	45	26,700	24,370	2,340	8.7%
LASSEN	32	12,730	11,760	970	7.6%
LOS ANGELES	37	5,043,900	4,652,200	391,700	7.8%
MADERA	39	70,100	64,400	5,800	8.2%
MARIN	1	145,800	140,100	5,700	3.9%
MARIPOSA	13	9,750	9,190	570	5.8%
MENDOCINO	10	43,200	40,730	2,470	5.7%
MERCED	54	114,200	102,400	11,900	10.4%
MODOC	37	3,650	3,360	290	7.8%
MONO	26	7,890	7,370	520	6.6%
MONTEREY	23	225,000	210,300	14,700	6.5%
NAPA	3	80,900	77,300	3,600	4.4%
NEVADA	13	49,120	46,280	2,840	5.8%
ORANGE	6	1,619,300	1,537,500	81,800	5.1%
PLACER	13	179,500	169,100	10,400	5.8%
PLUMAS	29	9,960	9,260	710	7.1%
RIVERSIDE	44	956,300	874,200	82,100	8.6%
SACRAMENTO	27	680,200	633,500	46,800	6.9%
SAN BENITO	23	26,300	24,600	1,700	6.5%
SAN BERNARDINO	33	861,600	795,300	66,400	7.7%
SAN DIEGO	16	1,598,400	1,504,600	93,800	5.9%
SAN FRANCISCO	3	499,400	477,600	21,800	4.4%
SAN JOAQUIN	49	297,000	268,100	28,900	9.7%
SAN LUIS OBISPO	9	140,000	132,500	7,500	5.4%
SAN MATEO	2	414,000	397,000	17,000	4.1%
SANTA BARBARA	8	222,800	210,900	11,900	5.3%
SANTA CLARA	7	945,700	896,700	48,900	5.2%
SANTA CRUZ	17	150,900	141,500	9,400	6.2%
SHASTA	33	80,500	74,200	6,200	7.7%
SIERRA	33	1,470	1,350	110	7.7%
SISKIYOU	41	19,010	17,410	1,590	8.4%
SOLANO	19	219,100	205,200	13,800	6.3%
SONOMA	5	265,900	252,800	13,200	4.9%
STANISLAUS	49	237,300	214,300	23,100	9.7%
SUTTER	53	40,700	36,500	4,200	10.3%
TEHAMA	42	25,220	23,080	2,130	8.5%
TRINITY	39	4,980	4,570	410	8.2%
TULARE	56	200,800	178,400	22,400	11.2%
TUOLUMNE	28	24,260	22,570	1,690	7.0%
VENTURA	21	431,400	403,600	27,700	6.4%
YOLO	21	97,000	90,800	6,200	6.4%
YUBA	55	27,000	24,000	3,000	11.1%

Notes

- 1) Data may not add due to rounding. The unemployment rate is calculated using unrounded data.
- 2) Labor force data for all geographic areas now reflect the March 2013 benchmark and Census 2010 population controls at the state level.

**REPORT 400 M**  
**Monthly Labor Force Data for California**  
**Counties and Metropolitan Statistical Areas**  
**September 2014 - Preliminary**  
 Data Not Seasonally Adjusted

Area	RANK BY RATE	LABOR FORCE	EMPLOYMENT	UNEMPLOYMENT	RATE
<b>STATE TOTAL</b>	<b>---</b>	<b>18,759,200</b>	<b>17,459,000</b>	<b>1,300,100</b>	<b>6.9%</b>
BAKERSFIELD DELANO MSA (Kern Co.)	52	396,900	361,700	35,200	8.9%
CHICO MSA (Butte Co.)	35	103,100	95,500	7,600	7.4%
EL CENTRO MSA (Imperial Co.)	64	79,100	60,100	18,900	23.9%
FRESNO MSA (Fresno Co.)	53	451,400	408,600	42,900	9.5%
HANFORD CORCORAN MSA (Kings Co.)	57	59,200	53,400	5,800	9.8%
LOS ANGELES LONG BEACH GLENDALE MD (Los Angeles Co.)	41	5,043,900	4,652,200	391,700	7.8%
MADERA CHOWCHILLA MSA (Madera Co.)	43	70,100	64,400	5,800	8.2%
MERCED MSA (Merced Co.)	59	114,200	102,400	11,900	10.4%
MODESTO MSA (Stanislaus Co.)	54	237,300	214,300	23,100	9.7%
NAPA MSA (Napa Co.)	4	80,900	77,300	3,600	4.4%
OAKLAND FREMONT HAYWARD MD	12	1,333,700	1,257,900	75,800	5.7%
Alameda Co.	12	789,800	745,000	44,700	5.7%
Contra Costa Co.	12	543,900	512,800	31,100	5.7%
OXNARD THOUSAND OAKS VENTURA MSA (Ventura Co.)	24	431,400	403,600	27,700	6.4%
REDDING MSA (Shasta Co.)	37	80,500	74,200	6,200	7.7%
RIVERSIDE SAN BERNARDINO ONTARIO MSA	43	1,818,000	1,669,500	148,500	8.2%
Riverside Co.	49	956,300	874,200	82,100	8.6%
San Bernardino Co.	37	861,600	795,300	66,400	7.7%
SACRAMENTO ARDEN ARCADE ROSEVILLE MSA	29	1,045,700	976,900	68,900	6.6%
El Dorado Co.	20	89,000	83,500	5,500	6.2%
Placer Co.	16	179,500	169,100	10,400	5.8%
Sacramento Co.	31	680,200	633,500	46,800	6.9%
Yolo Co.	24	97,000	90,800	6,200	6.4%
SALINAS MSA (Monterey Co.)	26	225,000	210,300	14,700	6.5%
SAN DIEGO CARLSBAD SAN MARCOS MSA (San Diego Co.)	19	1,598,400	1,504,600	93,800	5.9%
SAN FRANCISCO SAN MATEO REDWOOD CITY MD	3	1,059,100	1,014,700	44,400	4.2%
Marin Co.	1	145,800	140,100	5,700	3.9%
San Francisco Co.	4	499,400	477,600	21,800	4.4%
San Mateo Co.	2	414,000	397,000	17,000	4.1%
SAN JOSE SUNNYVALE SANTA CLARA MSA	8	972,000	921,300	50,600	5.2%
San Benito Co.	26	26,300	24,600	1,700	6.5%
Santa Clara Co.	8	945,700	896,700	48,900	5.2%
SAN LUIS OBISPO PASO ROBLES MSA (San Luis Obispo Co.)	11	140,000	132,500	7,500	5.4%
SANTA ANA ANAHEIM IRVINE MD (Orange Co.)	7	1,619,300	1,537,500	81,800	5.1%
SANTA BARBARA SANTA MARIA GOLETA MSA (Santa Barbara Co.)	10	222,800	210,900	11,900	5.3%
SANTA CRUZ WATSONVILLE MSA (Santa Cruz Co.)	20	150,900	141,500	9,400	6.2%
SANTA ROSA PETALUMA MSA (Sonoma Co.)	6	265,900	252,800	13,200	4.9%
STOCKTON MSA (San Joaquin Co.)	54	297,000	268,100	28,900	9.7%
VALLEJO FAIRFIELD MSA (Solano Co.)	22	219,100	205,200	13,800	6.3%
VISALIA PORTERVILLE MSA (Tulare Co.)	62	200,800	178,400	22,400	11.2%
YUBA CITY MSA	60	67,700	60,500	7,200	10.6%
Sutter Co.	58	40,700	36,500	4,200	10.3%
Yuba Co.	61	27,000	24,000	3,000	11.1%
Alpine Co.	54	390	350	40	9.7%
Amador Co.	34	15,960	14,800	1,160	7.3%
Calaveras Co.	37	19,320	17,840	1,480	7.7%
Colusa Co.	63	11,360	10,080	1,280	11.3%
Del Norte Co.	47	11,180	10,230	960	8.5%
Glenn Co.	50	13,160	12,020	1,140	8.7%
Humboldt Co.	26	57,600	53,800	3,800	6.5%
Inyo Co.	22	8,960	8,400	560	6.3%
Lake Co.	50	26,700	24,370	2,340	8.7%
Lassen Co.	36	12,730	11,760	970	7.6%
Mariposa Co.	16	9,750	9,190	570	5.8%
Mendocino Co.	12	43,200	40,730	2,470	5.7%
Modoc Co.	41	3,650	3,360	290	7.8%
Mono Co.	29	7,890	7,370	520	6.6%
Nevada Co.	16	49,120	46,280	2,840	5.8%
Plumas Co.	33	9,960	9,260	710	7.1%
Sierra Co.	37	1,470	1,350	110	7.7%
Siskiyou Co.	46	19,010	17,410	1,590	8.4%
Tehama Co.	47	25,220	23,080	2,130	8.5%
Trinity Co.	43	4,980	4,570	410	8.2%
Tuolumne Co.	32	24,260	22,570	1,690	7.0%

Notes

- 1) Data may not add due to rounding. The unemployment rate is calculated using unrounded data.
- 2) Labor force data for all geographic areas now reflect the March 2013 benchmark and Census 2010 population controls at the state level.



**Monthly Labor Force Data for Cities and Census Designated Places (CDP)  
 September 2014 - Preliminary  
 Data Not Seasonally Adjusted**

<b>Area Name</b>	<b>Labor Force</b>	<b>Employment</b>	<b>Unemployment Number</b>	<b>Unemployment Rate</b>	<b>Census Ratios Emp</b>	<b>Census Ratios Unemp</b>
El Dorado County	89,000	83,500	5,500	6.2%	1.000000	1.000000
Cameron Park CDP	8,800	8,400	400	4.3%	0.100610	0.068627
Diamond Springs CDP	2,300	2,100	200	8.2%	0.025356	0.034314
El Dorado Hills CDP	10,200	9,900	400	3.7%	0.118237	0.068627
Georgetown CDP	500	500	100	10.4%	0.005559	0.009804
Placerville city	5,200	4,700	500	9.3%	0.056407	0.088235
Pollock Pines CDP	2,400	2,200	200	7.3%	0.026576	0.031863
Shingle Springs CDP	1,500	1,500	100	4.4%	0.017492	0.012255
South Lake Tahoe city	14,800	13,500	1,300	8.6%	0.162034	0.230392

CDP is "Census Designated Place" - a recognized community that was unincorporated at the time of the 2000 Census.

**Notes:**

- 1) Data may not add due to rounding. All unemployment rates shown are calculated on unrounded data.
- 2) These data are not seasonally adjusted.

**Methodology:**

Monthly city and CDP labor force data are derived by multiplying current estimates of county employment and unemployment by the employment and unemployment shares (ratios) of each city and CDP at the time of the 2000 Census. Ratios for cities of 25,000 or more persons were developed from special tabulations based on household population only from the Bureau of Labor Statistics. For smaller cities and CDP, ratios were calculated from published census data.

City and CDP unrounded employment and unemployment are summed to get the labor force. The unemployment rate is calculated by dividing unemployment by the labor force. Then the labor force, employment, and unemployment are rounded.

This method assumes that the rates of change in employment and unemployment, since 2000, are exactly the same in each city and CDP as at the county level (i.e., that the shares are still accurate). If this assumption is not true for a specific city or CDP, then the estimates for that area may not represent the current economic conditions. Since this assumption is untested, caution should be employed when using these data.

**Monthly Labor Force Data for Cities and Census Designated Places (CDP)  
 September 2014 - Preliminary  
 Data Not Seasonally Adjusted**

<b>Area Name</b>	<b>Labor Force</b>	<b>Employment</b>	<b>Unemployment Number</b>	<b>Unemployment Rate</b>	<b>Census Ratios Emp</b>	<b>Census Ratios Unemp</b>
Placer County	179,500	169,100	10,400	5.8%	1.000000	1.000000
Auburn city	9,100	8,700	400	4.6%	0.051276	0.040598
Colfax city	1,100	1,000	100	8.4%	0.005744	0.008547
Dollar Point CDP	1,300	1,200	100	6.8%	0.007265	0.008547
Foresthill CDP	1,400	1,200	100	9.8%	0.007265	0.012821
Granite Bay CDP	13,300	12,800	500	4.0%	0.075688	0.051282
Kings Beach CDP	3,100	2,900	200	5.8%	0.017148	0.017094
Lincoln city	7,700	6,800	800	10.7%	0.040463	0.079060
Loomis town	4,600	4,500	200	3.4%	0.026356	0.014957
Meadow Vista CDP	2,300	2,200	100	5.8%	0.012756	0.012821
North Auburn CDP	7,500	7,000	500	6.8%	0.041308	0.049145
Rocklin city	27,500	26,400	1,100	4.1%	0.156192	0.108974
Roseville city	56,400	53,200	3,300	5.8%	0.314327	0.316239
Sunnyside Tahoe City CDP	2,000	1,800	100	6.7%	0.010897	0.012821
Tahoe Vista CDP	1,600	1,400	200	9.8%	0.008447	0.014957

CDP is "Census Designated Place" - a recognized community that was unincorporated at the time of the 2000 Census.

**Notes:**

- 1) Data may not add due to rounding. All unemployment rates shown are calculated on unrounded data.
- 2) These data are not seasonally adjusted.

**Methodology:**

Monthly city and CDP labor force data are derived by multiplying current estimates of county employment and unemployment by the employment and unemployment shares (ratios) of each city and CDP at the time of the 2000 Census. Ratios for cities of 25,000 or more persons were developed from special tabulations based on household population only from the Bureau of Labor Statistics. For smaller cities and CDP, ratios were calculated from published census data.

City and CDP unrounded employment and unemployment are summed to get the labor force. The unemployment rate is calculated by dividing unemployment by the labor force. Then the labor force, employment, and unemployment are rounded.

This method assumes that the rates of change in employment and unemployment, since 2000, are exactly the same in each city and CDP as at the county level (i.e., that the shares are still accurate). If this assumption is not true for a specific city or CDP, then the estimates for that area

**Data Not Seasonally Adjusted**

<b>Area Name</b>	<b>Labor Force</b>	<b>Employ- ment</b>	<b>Unemployment Number</b>	<b>Rate</b>	<b>Census Ratios Emp</b>	<b>Unemp</b>
------------------	------------------------	-------------------------	--------------------------------	-------------	------------------------------	--------------

may not represent the current economic conditions. Since this assumption is untested, caution should be employed when using these data.

**Monthly Labor Force Data for Cities and Census Designated Places (CDP)  
 September 2014 - Preliminary  
 Data Not Seasonally Adjusted**

<b>Area Name</b>	<b>Labor Force</b>	<b>Employment</b>	<b>Unemployment Number</b>	<b>Unemployment Rate</b>	<b>Census Ratios Emp</b>	<b>Census Ratios Unemp</b>
Sacramento County	680,200	633,500	46,800	6.9%	1.000000	1.000000
Arden Arcade CDP	56,600	52,700	3,900	6.8%	0.083249	0.082638
Carmichael CDP	29,600	28,000	1,600	5.3%	0.044196	0.033389
Citrus Heights city	51,100	48,700	2,400	4.8%	0.076838	0.052031
Elk Grove CDP	35,500	33,600	2,000	5.5%	0.052995	0.042014
Fair Oaks CDP	17,500	16,900	600	3.6%	0.026690	0.013634
Florin CDP	12,400	11,000	1,400	11.0%	0.017414	0.029215
Folsom city	27,800	26,900	800	3.0%	0.042525	0.018086
Foothill Farms CDP	9,600	8,600	900	9.5%	0.013648	0.019477
Galt city	10,600	9,400	1,200	11.4%	0.014787	0.025876
Gold River CDP	5,000	4,900	100	1.3%	0.007807	0.001391
Isleton city	400	400	0	9.2%	0.000606	0.000835
La Riviera CDP	7,100	6,800	300	4.0%	0.010764	0.006121
Laguna CDP	20,900	20,200	800	3.7%	0.031834	0.016416
Laguna West Lakeside CDP	5,400	5,100	300	4.8%	0.008082	0.005565
North Highlands CDP	22,000	19,600	2,400	10.9%	0.030952	0.051475
Orangevale CDP	16,100	15,300	700	4.6%	0.024229	0.015860
Parkway South Sacramento CD	15,500	13,600	1,900	12.4%	0.021400	0.041180
Rancho Cordova City	30,700	28,300	2,400	7.9%	0.044619	0.052031
Rancho Murieta CDP	2,300	2,300	100	2.2%	0.003619	0.001113
Rio Linda CDP	5,600	5,000	600	11.1%	0.007917	0.013356
Rosemont CDP	14,000	13,200	800	5.8%	0.020867	0.017251
Sacramento city	214,200	196,800	17,400	8.1%	0.310678	0.371731
Vineyard CDP	6,000	5,800	200	3.5%	0.009185	0.004452
Walnut Grove CDP	400	400	100	17.8%	0.000569	0.001669
Wilton CDP	2,800	2,700	100	4.6%	0.004225	0.002782

CDP is "Census Designated Place" - a recognized community that was unincorporated at the time of the 2000 Census.

**Notes:**

- 1) Data may not add due to rounding. All unemployment rates shown are calculated on unrounded data.
- 2) These data are not seasonally adjusted.

**Methodology:**

Monthly city and CDP labor force data are derived by multiplying current estimates of county employment and unemployment by the employment and unemployment shares (ratios) of

### Data Not Seasonally Adjusted

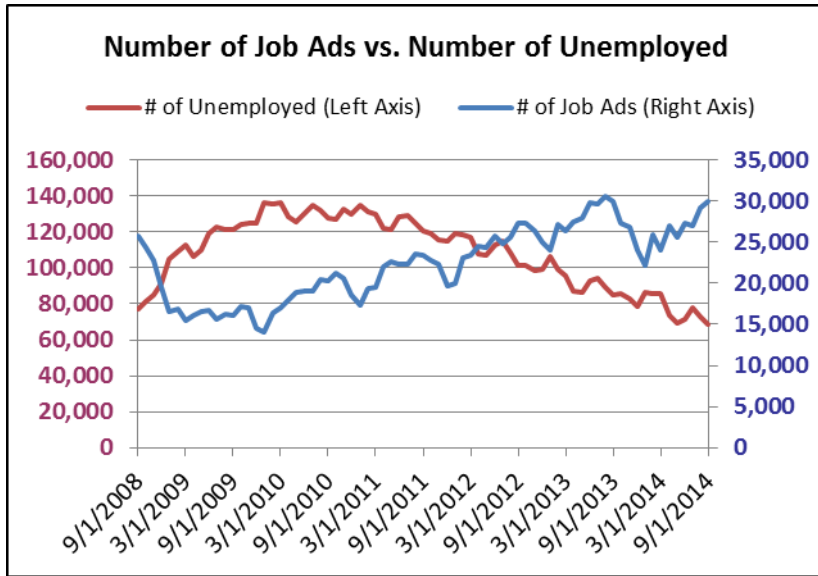
<b>Area Name</b>	<b>Labor Force</b>	<b>Employment</b>	<b>Unemployment Number</b>	<b>Unemployment Rate</b>	<b>Census Ratios</b>	
					<b>Emp</b>	<b>Unemp</b>

each city and CDP at the time of the 2000 Census. Ratios for cities of 25,000 or more persons were developed from special tabulations based on household population only from the Bureau of Labor Statistics. For smaller cities and CDP, ratios were calculated from published census data.

City and CDP unrounded employment and unemployment are summed to get the labor force. The unemployment rate is calculated by dividing unemployment by the labor force. Then the labor force, employment, and unemployment are rounded.

This method assumes that the rates of change in employment and unemployment, since 2000, are exactly the same in each city and CDP as at the county level (i.e., that the shares are still accurate). If this assumption is not true for a specific city or CDP, then the estimates for that area may not represent the current economic conditions. Since this assumption is untested, caution should be employed when using these data.

# Recent Job Ads for Sacramento Arden Arcade Roseville MSA September 2014

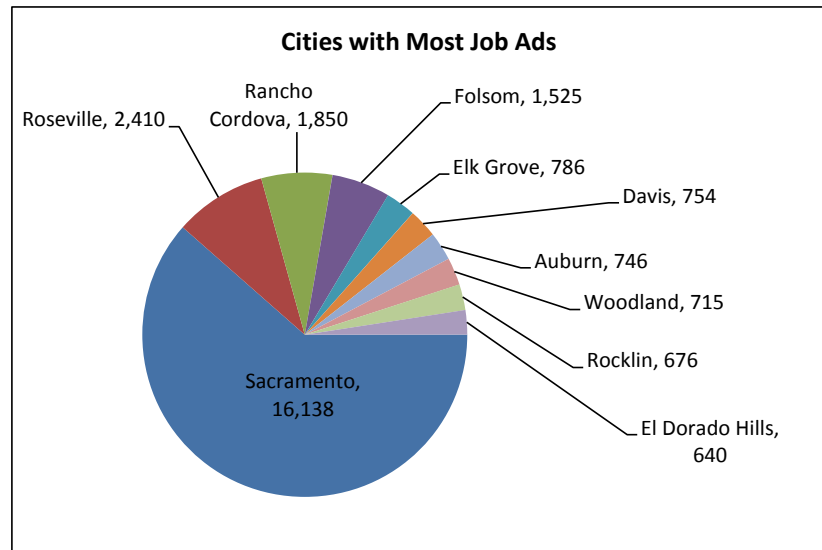


### Employers with Most Job Ads

Sutter Health	- 659
Kaiser Permanente	- 618
Dignity Health	- 593
Wellpoint, Inc.	- 334
Randstad	- 296
Wells Fargo	- 268
Robert Half International	- 222
Blue Shield of California	- 215
Intel	- 199
University of California, Davis	- 185

### Occupations with Most Job Ads

Registered Nurses	- 1661
Retail Salespersons	- 732
First-Line Supervisors of Retail Sales Workers	- 659
Customer Service Representatives	- 601
Heavy and Tractor-Trailer Truck Drivers	- 533
Computer Systems Analysts	- 494
First-Line Supervisors of Office & Administrative Support	- 479
Computer User Support Specialists	- 474
Medical and Health Services Managers	- 468
Management Analysts	- 407



October 17, 2014

Employment Development Department  
 Labor Market Information Division  
 (916) 262-2162

**Sacramento Arden Arcade Roseville MSA**  
**(El Dorado, Placer, Sacramento, and Yolo Counties)**  
 Industry Employment & Labor Force  
 March 2013 Benchmark

Data Not Seasonally Adjusted

	Sep 13	Jul 14	Aug 14 Revised	Sep 14 Prelim	Percent Change	
					Month	Year
Civilian Labor Force (1)	1,043,400	1,049,000	1,050,700	1,045,700	-0.5%	0.2%
Civilian Employment	958,600	971,400	977,800	976,900	-0.1%	1.9%
Civilian Unemployment	84,800	77,600	72,900	68,900	-5.5%	-18.8%
Civilian Unemployment Rate	8.1%	7.4%	6.9%	6.6%		
(CA Unemployment Rate)	8.5%	7.9%	7.5%	6.9%		
(U.S. Unemployment Rate)	7.0%	6.5%	6.3%	5.7%		
<b>Total, All Industries (2)</b>	<b>875,200</b>	<b>892,400</b>	<b>893,400</b>	<b>893,500</b>	<b>0.0%</b>	<b>2.1%</b>
Total Farm	9,500	10,600	10,400	10,000	-3.8%	5.3%
Total Nonfarm	865,700	881,800	883,000	883,500	0.1%	2.1%
Total Private	647,300	665,900	666,000	663,100	-0.4%	2.4%
Goods Producing	81,000	84,700	84,600	85,000	0.5%	4.9%
Mining and Logging	500	500	500	500	0.0%	0.0%
Construction	46,000	48,700	48,000	48,900	1.9%	6.3%
Construction of Buildings	10,000	10,100	10,200	10,200	0.0%	2.0%
Specialty Trade Contractors	30,300	32,300	32,100	32,200	0.3%	6.3%
Building Foundation & Exterior Contractors	7,600	7,800	8,100	8,100	0.0%	6.6%
Building Equipment Contractors	11,700	12,500	12,100	12,000	-0.8%	2.6%
Building Finishing Contractors	6,900	7,800	8,000	7,900	-1.3%	14.5%
Manufacturing	34,500	35,500	36,100	35,600	-1.4%	3.2%
Durable Goods	23,300	24,800	24,700	24,300	-1.6%	4.3%
Computer & Electronic Product Manufacturing	7,100	7,600	7,500	7,400	-1.3%	4.2%
Nondurable Goods	11,200	10,700	11,400	11,300	-0.9%	0.9%
Food Manufacturing	4,700	4,100	4,900	4,800	-2.0%	2.1%
Service Providing	784,700	797,100	798,400	798,500	0.0%	1.8%
Private Service Providing	566,300	581,200	581,400	578,100	-0.6%	2.1%
Trade, Transportation & Utilities	141,800	143,300	143,300	142,700	-0.4%	0.6%
Wholesale Trade	25,100	25,200	25,300	25,100	-0.8%	0.0%
Merchant Wholesalers, Durable Goods	14,000	14,300	14,300	14,200	-0.7%	1.4%
Merchant Wholesalers, Nondurable Goods	8,400	8,200	8,200	8,200	0.0%	-2.4%
Retail Trade	93,300	95,100	94,900	94,000	-0.9%	0.8%
Motor Vehicle & Parts Dealer	12,500	12,900	13,000	12,900	-0.8%	3.2%
Building Material & Garden Equipment Stores	7,800	8,300	8,100	8,000	-1.2%	2.6%
Grocery Stores	17,600	17,900	17,900	18,000	0.6%	2.3%
Health & Personal Care Stores	5,300	5,200	5,100	5,200	2.0%	-1.9%
Clothing & Clothing Accessories Stores	6,900	7,200	7,200	7,000	-2.8%	1.4%
Sporting Goods, Hobby, Book & Music Stores	4,200	3,900	4,000	4,100	2.5%	-2.4%
General Merchandise Stores	19,400	19,700	19,600	19,700	0.5%	1.5%
Transportation, Warehousing & Utilities	23,400	23,000	23,100	23,600	2.2%	0.9%
Information	14,700	14,500	14,400	14,300	-0.7%	-2.7%
Publishing Industries (except Internet)	2,500	2,400	2,400	2,400	0.0%	-4.0%
Telecommunications	7,600	7,700	7,700	7,700	0.0%	1.3%
Financial Activities	49,600	49,800	50,300	50,900	1.2%	2.6%
Finance & Insurance	36,400	36,100	36,500	37,000	1.4%	1.6%
Credit Intermediation & Related Activities	13,000	12,600	12,700	12,900	1.6%	-0.8%
Depository Credit Intermediation	7,900	7,800	7,800	7,900	1.3%	0.0%
Nondepository Credit Intermediation	2,600	2,500	2,500	2,500	0.0%	-3.8%
Insurance Carriers & Related	19,200	19,300	19,400	19,700	1.5%	2.6%
Real Estate & Rental & Leasing	13,200	13,700	13,800	13,900	0.7%	5.3%
Real Estate	10,100	10,400	10,400	10,600	1.9%	5.0%
Professional & Business Services	115,800	121,800	122,300	121,600	-0.6%	5.0%
Professional, Scientific & Technical Services	52,000	55,200	55,400	54,700	-1.3%	5.2%
Architectural, Engineering & Related Services	8,800	9,900	10,100	10,000	-1.0%	13.6%
Management of Companies & Enterprises	10,200	10,600	10,600	10,600	0.0%	3.9%
Administrative & Support & Waste Services	53,600	56,000	56,300	56,300	0.0%	5.0%
Administrative & Support Services	50,800	53,200	53,400	53,400	0.0%	5.1%
Employment Services	21,900	23,100	23,800	24,400	2.5%	11.4%
Services to Buildings & Dwellings	10,900	11,100	11,300	11,200	-0.9%	2.8%

Data Not Seasonally Adjusted

	Sep 13	Jul 14	Aug 14	Sep 14	Percent Change	
			Revised	Prelim	Month	Year
Educational & Health Services	127,600	132,500	132,300	133,900	1.2%	4.9%
Education Services	13,400	13,000	13,000	13,500	3.8%	0.7%
Health Care & Social Assistance	114,200	119,500	119,300	120,400	0.9%	5.4%
Ambulatory Health Care Services	41,400	43,700	43,900	45,000	2.5%	8.7%
Hospitals	23,700	24,100	24,100	24,100	0.0%	1.7%
Nursing & Residential Care Facilities	15,700	15,800	15,800	15,800	0.0%	0.6%
Leisure & Hospitality	87,700	90,500	89,700	86,000	-4.1%	-1.9%
Arts, Entertainment & Recreation	13,900	14,300	13,900	13,500	-2.9%	-2.9%
Accommodation & Food Services	73,800	76,200	75,800	72,500	-4.4%	-1.8%
Accommodation	8,400	8,500	8,400	8,200	-2.4%	-2.4%
Food Services & Drinking Places	65,400	67,700	67,400	64,300	-4.6%	-1.7%
Full-Service Restaurants	30,500	30,500	30,100	28,700	-4.7%	-5.9%
Limited-Service Eating Places	31,800	32,300	32,400	31,200	-3.7%	-1.9%
Other Services	29,100	28,800	29,100	28,700	-1.4%	-1.4%
Repair & Maintenance	8,600	8,400	8,500	8,400	-1.2%	-2.3%
Government	218,400	215,900	217,000	220,400	1.6%	0.9%
Federal Government	13,600	13,500	13,500	13,500	0.0%	-0.7%
Department of Defense	1,600	1,600	1,600	1,600	0.0%	0.0%
State & Local Government	204,800	202,400	203,500	206,900	1.7%	1.0%
State Government	109,000	110,400	111,400	111,800	0.4%	2.6%
State Government Education	25,900	25,200	26,000	26,300	1.2%	1.5%
State Government Excluding Education	83,100	85,200	85,400	85,500	0.1%	2.9%
Local Government	95,800	92,000	92,100	95,100	3.3%	-0.7%
Local Government Education	53,100	47,900	48,300	52,200	8.1%	-1.7%
Local Government Excluding Education	42,700	44,100	43,800	42,900	-2.1%	0.5%
County	18,000	18,400	18,300	18,200	-0.5%	1.1%
City	9,600	10,400	10,200	9,800	-3.9%	2.1%
Special Districts plus Indian Tribes	15,100	15,300	15,300	14,900	-2.6%	-1.3%

**Notes:**

(1) Civilian labor force data are by place of residence; include self-employed individuals, unpaid family workers, household domestic workers, & workers on strike. Data may not add due to rounding. The unemployment rate is calculated using unrounded data.

(2) Industry employment is by place of work; excludes self-employed individuals, unpaid family workers, household domestic workers, & workers on strike. Data may not add due to rounding.

These data are produced by the Labor Market Information Division of the California Employment Development Department (EDD). Questions should be directed to: George Marley 916/227-0298 or Nati Martinez 209/941-6551

These data, as well as other labor market data, are available via the Internet at <http://www.labormarketinfo.edd.ca.gov>. If you need assistance, please call (916) 262-2162.

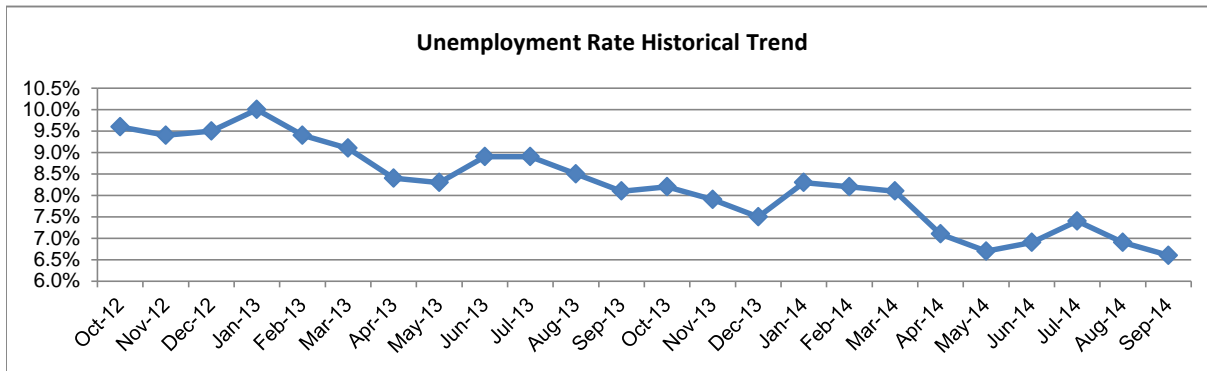
#####



IMMEDIATE RELEASE

SACRAMENTO-ARDEN ARCADE-ROSEVILLE METROPOLITAN STATISTICAL AREA (MSA)  
 (El Dorado, Placer, Sacramento, and Yolo Counties)

The unemployment rate in the Sacramento-Arden Arcade-Roseville MSA was 6.6 percent in September 2014, down from a revised 6.9 percent in August 2014, and below the year-ago estimate of 8.1 percent. This compares with an unadjusted unemployment rate of 6.9 percent for California and 5.7 percent for the nation during the same period. The unemployment rate was 6.2 percent in El Dorado County, 5.8 percent in Placer County, 6.9 percent in Sacramento County, and 6.4 percent in Yolo County.



Industry	Aug-2014	Sep-2014	Change		Sep-2013	Sep-2014	Change
	Revised	Prelim				Prelim	
Total, All Industries	893,400	893,500	100		875,200	893,500	18,300
Total Farm	10,400	10,000	(400)		9,500	10,000	500
Total Nonfarm	883,000	883,500	500		865,700	883,500	17,800
Mining and Logging	500	500	0		500	500	0
Construction	48,000	48,900	900		46,000	48,900	2,900
Manufacturing	36,100	35,600	(500)		34,500	35,600	1,100
Trade, Transportation & Utilities	143,300	142,700	(600)		141,800	142,700	900
Information	14,400	14,300	(100)		14,700	14,300	(400)
Financial Activities	50,300	50,900	600		49,600	50,900	1,300
Professional & Business Services	122,300	121,600	(700)		115,800	121,600	5,800
Educational & Health Services	132,300	133,900	1,600		127,600	133,900	6,300
Leisure & Hospitality	89,700	86,000	(3,700)		87,700	86,000	(1,700)
Other Services	29,100	28,700	(400)		29,100	28,700	(400)
Government	217,000	220,400	3,400		218,400	220,400	2,000

Notes: Data not adjusted for seasonality. Data may not add due to rounding  
 Labor force data are revised month to month  
 Additional data are available on line at [www.labormarketinfo.edd.ca.gov](http://www.labormarketinfo.edd.ca.gov)

**Monthly Labor Force Data for Cities and Census Designated Places (CDP)  
 September 2014 - Preliminary  
 Data Not Seasonally Adjusted**

<b>Area Name</b>	<b>Labor Force</b>	<b>Employment</b>	<b>Unemployment Number</b>	<b>Unemployment Rate</b>	<b>Census Ratios Emp</b>	<b>Census Ratios Unemp</b>
Yolo County	97,000	90,800	6,200	6.4%	1.000000	1.000000
Davis city	38,700	37,200	1,600	4.0%	0.409375	0.251572
Esparto CDP	900	900	100	6.9%	0.009693	0.010482
West Sacramento city	15,900	14,300	1,600	10.1%	0.157748	0.259958
Winters city	3,600	3,300	300	7.3%	0.036250	0.041929
Woodland city	28,200	26,100	2,100	7.6%	0.287346	0.345912

CDP is "Census Designated Place" - a recognized community that was unincorporated at the time of the 2000 Census.

**Notes:**

- 1) Data may not add due to rounding. All unemployment rates shown are calculated on unrounded data.
- 2) These data are not seasonally adjusted.

**Methodology:**

Monthly city and CDP labor force data are derived by multiplying current estimates of county employment and unemployment by the employment and unemployment shares (ratios) of each city and CDP at the time of the 2000 Census. Ratios for cities of 25,000 or more persons were developed from special tabulations based on household population only from the Bureau of Labor Statistics. For smaller cities and CDP, ratios were calculated from published census data.

City and CDP unrounded employment and unemployment are summed to get the labor force. The unemployment rate is calculated by dividing unemployment by the labor force. Then the labor force, employment, and unemployment are rounded.

This method assumes that the rates of change in employment and unemployment, since 2000, are exactly the same in each city and CDP as at the county level (i.e., that the shares are still accurate). If this assumption is not true for a specific city or CDP, then the estimates for that area may not represent the current economic conditions. Since this assumption is untested, caution should be employed when using these data.

## ITEM IV-G – INFORMATION

### COMMITTEE UPDATES

#### BACKGROUND:

This item provides an opportunity for a report from the following committees:

- Youth Council – Matt Kelly
- Planning/Oversight Committee – Anette Smith-Dohring
- Employer Outreach Committee – Larry Booth
- Board Development Committee – Terry Wills

## ITEM V - OTHER REPORTS

### 1. CHAIR'S REPORT

The Chair of the Sacramento Works, Inc. Board, on a regular basis, receives numerous items of information concerning employment and training legislation, current programs, agency activities, and miscellaneous articles.

The important information from the material received and meetings attended will be shared with the entire Board and the method proposed by the Chair is to give a verbal report at each regular meeting. It will also allow time for the Board to provide input on items that may require future action.

### 2. MEMBERS OF THE BOARD

This item provides the opportunity for Workforce Investment Board members to raise any items for consideration not covered under the formal agenda. It also provides the opportunity for Board members to request staff to research or follow up on specific requests or to ask that certain items be placed on the next agenda.

### 3. COUNSEL REPORT:

The Sacramento Works, Inc. Legal Counsel is the firm of Phillip M. Cunningham, Attorney at Law. This item provides the opportunity for Legal Counsel to provide the Sacramento Works, Inc. Board with an oral or written report on legal activities

### 4. PUBLIC PARTICIPATION:

Participation of the general public at Sacramento Works, Inc. Board meetings is encouraged. The Sacramento Works, Inc. Board has decided to incorporate participants of the audience as part of its agenda for all meetings. Members of the audience are asked to address their requests to the Chair, if they wish to speak.